

Adaptaid⁺

Pass-through Endoscope Transport and Storage Cabinet



Sterilization/MDRD

Endoscopy

Pass-through Cabinet for Transport Trays

The pass-through cabinet for transport trays is installed in a wall to provide a physical separation between two distinct areas.

This pass-through cabinet secures and simplifies the transport of instruments, such as flexible endoscopes, thanks to transport trays that slide easily into the side rails provided for this purpose. The interior features continuous ventilation with a HEPA filter.

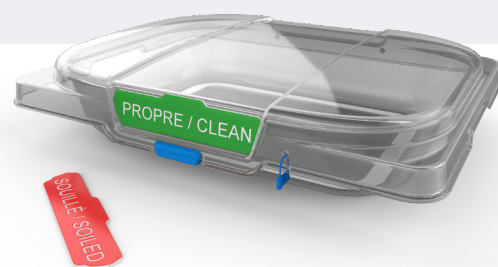
Made entirely of 304-grade stainless steel, the cabinet has sealed doors with an interlocking system to ensure an aseptic environment that reduces the risk of cross-contamination.

This model has been developed for a capacity of seven transport trays, and several other cabinet dimensions are available on request.



Increased Productivity

The use of the pass-through cabinet increases productivity by reducing the amount of time it normally takes to transport instruments.



Robust, Durable Transport Tray

Designed specifically for the medical industry, the endoscope tray features a transparent lid, two side handles for easy handling, and an integrated hole for inserting tamper-proof locks. A reusable label (dirty/clean) is placed under the lid to indicate the condition of the instrument inside.

Features of Pass-through Cabinets

High-Quality Standard Features That Ensure an Aseptic Environment

Structure	Robust stainless steel construction.
Doors	Double-walled with airtight seals and full-length tempered glass windows. Interlocking system and audible door-open alarm.
Slide rails	Stainless steel with retaining stops.
Ventilation	Continuously ventilated interior. Ventilation failure indicator.
Filters	99.97% HEPA cabinet filters with air inlet and outlet pre-filters. Replacement indicator and front access for filter changes.
Dimensions	Cabinet W x D x H: 28.25 x 23 x 52.75 inches, 718 x 584 x 1340 mm Frame W x D x H: 39.75 x .88 x 86.5 inches, 1010 x 22 x 2197 mm
Others	Stainless steel drip tray. LED lighting is evenly distributed in the cabinet.



Scope Tray Features

Compatible with Large Probes and Flexible Endoscopes

Structure	Molded case in transparent gray polycarbonate with two side handles and a built-in hole to insert tamper-evident locks. Robust, durable and environmentally friendly. No consumables required.
Lid	Molded in transparent polycarbonate designed for quick viewing of content.
Dimensions	W x D x H: 22.9 x 18 x 5 inches, 582 x 457 x 127 mm
Cleaning	Easy to clean and compatible with automated washers.
Accessories	Reversible and reusable 'clean/soiled' label.

Adaptaid⁺

High-Performance Medical Equipment
Designed for Healthcare Professionals

For more information about our products, contact our customer service department.



CONTACT US
+1 450-585-7272
customerservice@adaptaid.com



©2026 ADAPTAIDE INC. ALL RIGHTS RESERVED

adaptaid.com